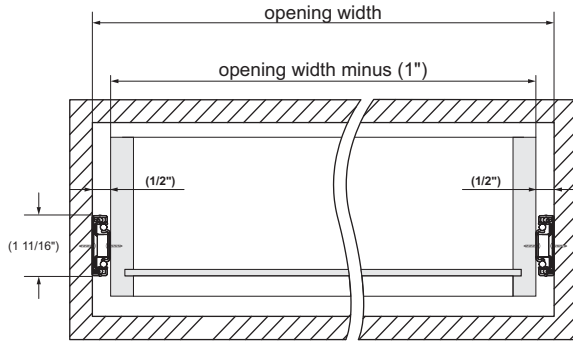
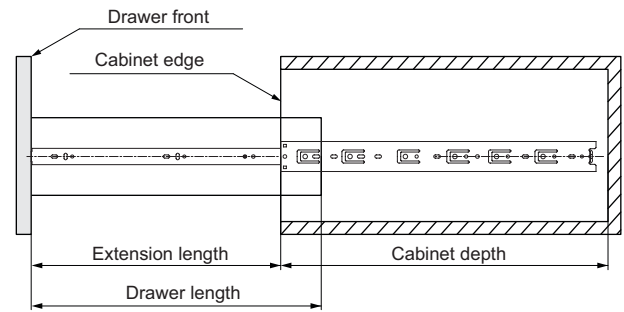


Specifications

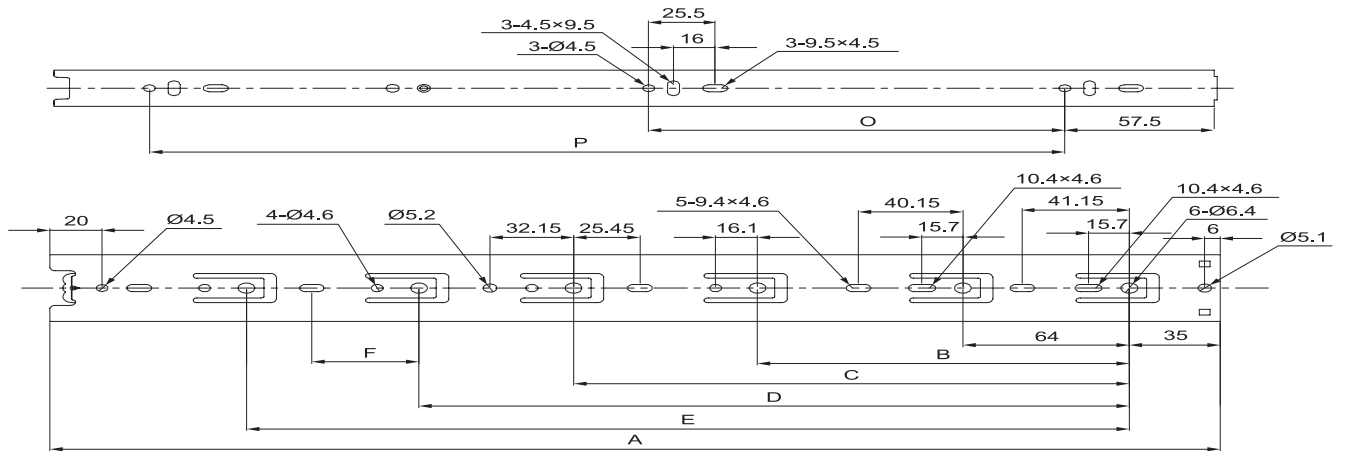
• **Space required**



• **Extension length**

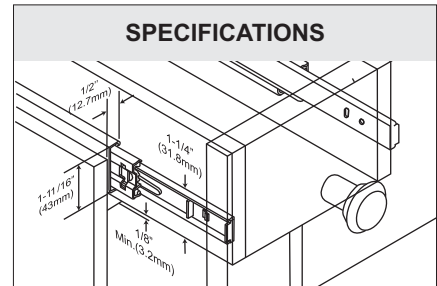
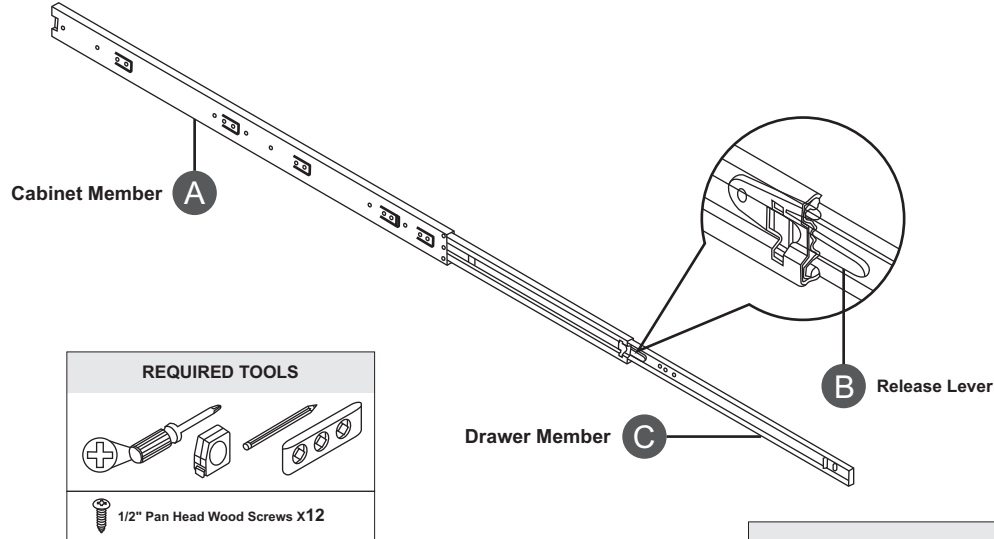


• **Holes pattern and length specifications**



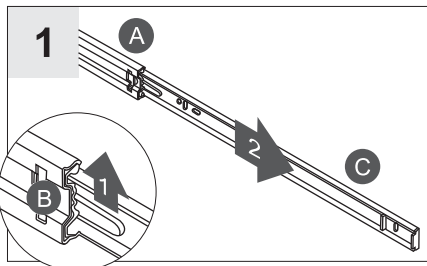
Item number	Drawer length	Extension length	Mounting holes distance								
			A	B	C	D	E	F	O	P	
TCH-22101 250	(10") 250mm	253mm	250	148	--	--	--	--	--	176	--
TCH-22101 300	(12") 300mm	304mm	300	224	--	--	--	--	--	96	224
TCH-22101 350	(14") 350mm	355mm	350	--	--	224	--	50	--	128	256
TCH-22101 400	(16") 400mm	405mm	400	224	--	288	--	--	--	160	320
TCH-22101 450	(18") 450mm	456mm	450	224	352	--	--	--	--	160	352
TCH-22101 500	(20") 500mm	507mm	500	224	352	416	--	--	--	192	416
TCH-22101 550	(22") 550mm	558mm	550	224	352	416	--	50	--	224	448
TCH-22101 600	(24") 600mm	609mm	600	224	352	480	--	50	--	256	512



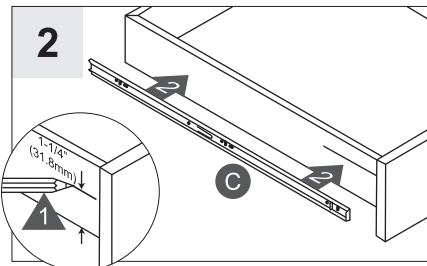


IMPORTANT:

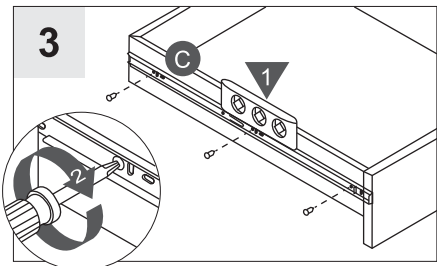
- Please READ through all instructions before you begin.
- To avoid binding, drawer must be 1/2" narrower than cabinet opening on each side.
- Top and bottom of drawer should have 1/8" minimum clearance from cabinet opening.
- For face-frame cabinets, the TCH-22101 R Z Socket is required.



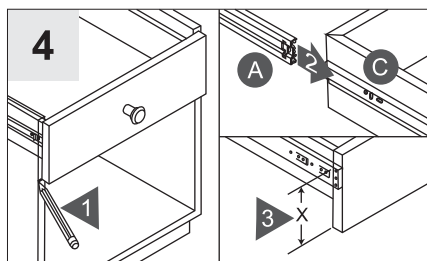
Press release the lever (B). Remove drawer member (C) from the Cabinet member (A).



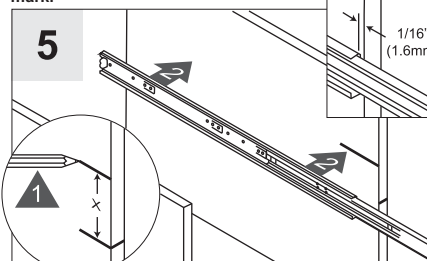
Mark 1-1/4" (32mm) from the bottom of the drawer side panel. Align the top of the drawer member (C) with the mark.



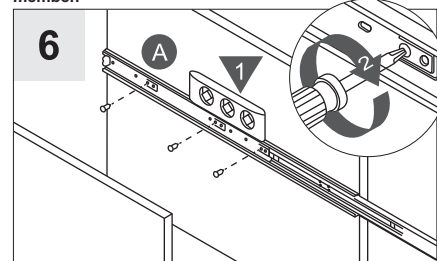
Make sure the drawer member (C) is level. Secure with screws. Repeat Steps 1-3 for the remaining drawer member.



Determine drawer position. Mark bottom of the drawer front on the left and right sides. Place cabinet members (A) onto the drawer members (C). Measure "X".



Mark "X" from the bottom of the mark. Repeat Step #1 to remove drawer member (C) from the Cabinet member (A). Align top of the cabinet member (A) with the mark, 1/16" (1.6mm) from the front of the cabinet.



Make sure cabinet member (A) is level, secure with the screws. Repeat for the remaining cabinet member (A). Insert the drawer member (C) into the cabinet member (A) and close the drawer. Release member (B) will automatically locks.

